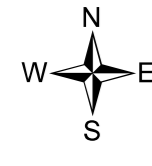
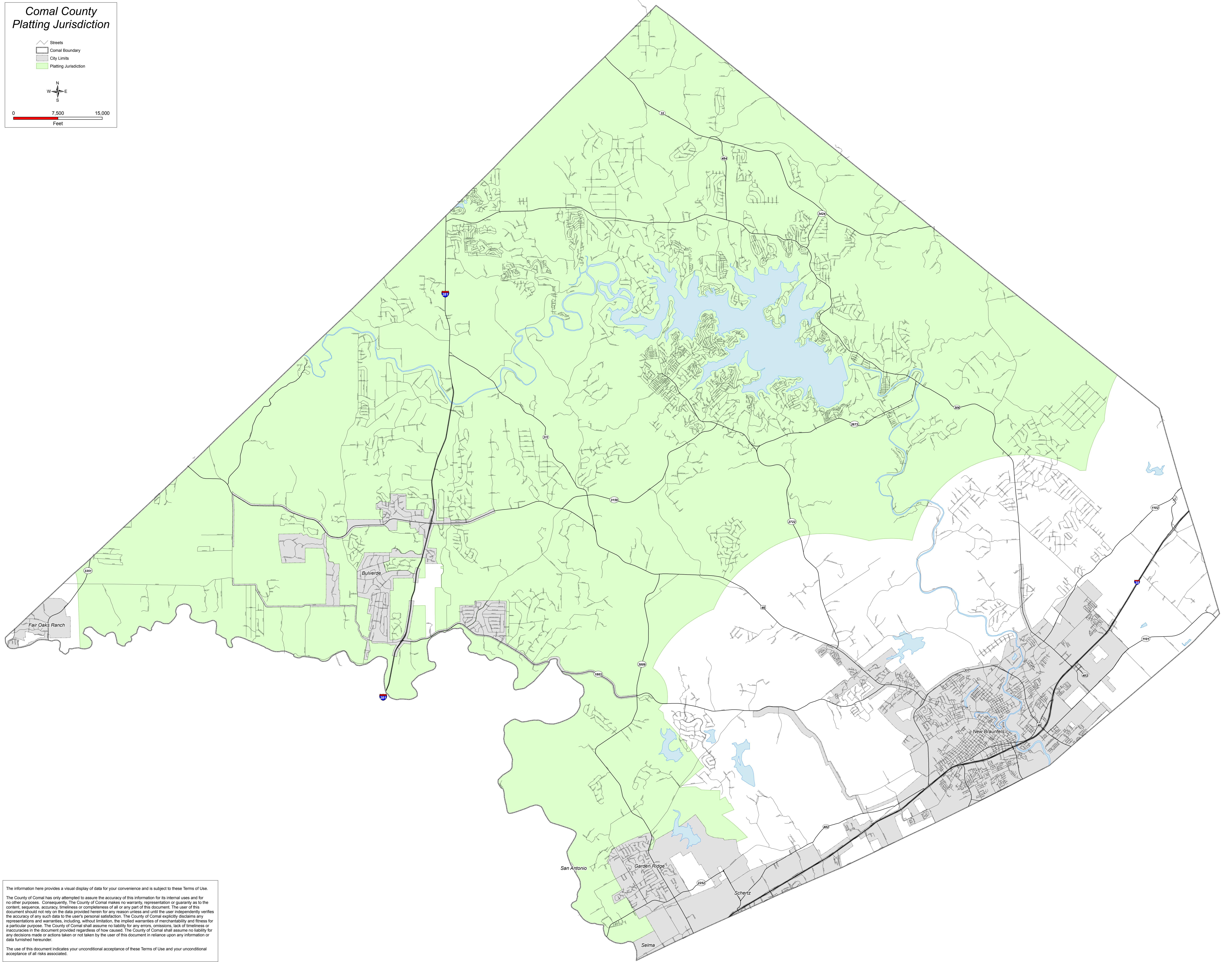


# Comal County Platting Jurisdiction

- Streets
- Comal Boundary
- City Limits
- Platting Jurisdiction



0 7,500 15,000  
Feet



The information here provides a visual display of data for your convenience and is subject to these Terms of Use. The County of Comal has only attempted to assure the accuracy of this information for its internal uses and for no other purposes. Consequently, the County of Comal makes no warranty, representation or guaranty as to the content, sequence, accuracy, timeliness or completeness of all or any part of this document. The user of this document should not rely on the data provided herein for any reason unless and until the user independently verifies the accuracy of any such data to the user's personal satisfaction. The County of Comal explicitly disclaims any representations and warranties, including, without limitation, the implied warranties of merchantability and fitness for a particular purpose. The County of Comal shall assume no liability for any errors, omissions, lack of timeliness or inaccuracies in the document provided regardless of how caused. The County of Comal shall assume no liability for any decisions made or actions taken or not taken by the user of this document in reliance upon any information or data furnished hereunder.

The use of this document indicates your unconditional acceptance of these Terms of Use and your unconditional acceptance of all risks associated.